

# Lead Level in Umbilical Cord Blood and its Effects on Newborns Anthropometry

AKBARI-NASSAJI NEDA<sup>1</sup>, SABETI FAHIMEH<sup>2</sup>, ZIAEI KAJBAF TAHEREH<sup>3</sup>, FAKHARZADEH LEILA<sup>4</sup>, NAZARI ZAHRA<sup>5</sup>, CHERAGHIAN BAHMAN<sup>6</sup>, CHAM KOURI NARGES<sup>7</sup>

## ABSTRACT

**Introduction:** High concentration of blood lead is accompanied by adverse health effects on growth of foetus and the newborn.

**Aim:** The aim of this study was to determine umbilical cord blood lead level and its relationship with birth weight, length and head circumference of the newborns in Abadan, Iran.

**Materials and Methods:** In this cross-sectional study, 3 ml blood was collected from the umbilical cord vein in 147 newborns, immediately after the birth. Blood lead was measured using atomic absorption spectrophotometry. Data collection instruments included demographic questionnaire (age of mother, gestational age, newborn gender, job and education of mother) and also data registration form (umbilical cord blood

lead concentration, weight, length, and head circumference of newborn). Data was analyzed with SPSS software version 16.0.

**Results:** The mean of umbilical cord blood lead was determined  $0.65 \pm 0.32 \mu\text{g/dl}$  ( $0.3-1.35 \mu\text{g/dl}$ ). The decrease of birth weight with increased blood lead level was small and was not statistically significant. There was reverse significant correlation between umbilical cord blood lead level and birth length and head circumference. There was no significant correlation between blood lead and other variables such as age, weight, education and job of mother and gestational age.

**Conclusion:** Umbilical blood lead level was determined  $<5 \mu\text{g/dl}$ . Excess of umbilical cord blood lead caused decreasing birth weight, length and head circumference of the newborns.

**Keywords:** Birth weight, Blood lead, Fetal development

## INTRODUCTION

Lead is a neurotoxic metal that is widespread in the environment [1]. Industrial activities, environmental pollution, agricultural technology and processed foods are the main sources of lead [2]. Lead exists in water, food, soil, air, dust, paint, toy, lead glazed ceramic pottery and battery [3]. The first reports of lead poisoning were published in early 19<sup>th</sup> century in England. Blood lead level of the women who were exposed to lead in workplace or house was reported to be high and a relationship was found between high blood lead levels and low birth weight [4]. Lead causes adverse effects in blood, neural and renal systems and damage of the organs depends on exposure to lead and absorption and desorption [5]. The developing foetus and children are vulnerable to adverse health effects of lead. Lead is easily absorbed through skin, respiration and digestion [6]. The pregnant women who were in touch with lead since childhood, lead is highly stored in their bones and discharged from bones during pregnancy and breastfeeding and enters the blood again [7]. In these women, more than 85% of the lead entering the body is absorbed and is transferred from placenta to foetus and causes serious adverse health effects in foetus. Umbilical cord blood lead level of  $10 \mu\text{g/dl}$  is accompanied by adverse effects such as miscarriage, premature birth, low birth weight [8] and higher level of lead causes more serious complications such as fetal abnormalities, brain injury, hearing and visual impairment and even death [5,6]. According to Agency for Toxic Substance and Disease Registry (2007), there are adverse effects such as neurodevelopmental defect, delay in reproductive system, neurobehavioral effects, reduction of GFR and reduced heme synthesis in PbBs  $< 0 \mu\text{g/dl}$  [6]. So, U.S. Preventive Services Task Force (USPSTF) suggests routine screening of pregnant women and children about concentration of the blood lead [9]. In 2010, the US Centers for Disease Control (CDC) [3], and the American College of Obstetricians and Gynecologists recommended that B-Pb should be  $<5 \mu\text{g/dl}$  in the pregnant women [10].

Results of the studies conducted on lead level of mother and birth outcome are controversial. Some previous studies found significant reverse relationship between level of umbilical cord blood lead and newborn anthropometry [1,5,11-14]. In other studies, there was no relationship between high umbilical cord blood lead and weight, length and head circumference of the newborn [15,16]. Considering the results in the previous studies and that birth weight is a predictor factor of growth and development and survival of the newborn [5] and low birth weight is one of the important factors of mortality [17], and 5-12% incidence of low birth weight in Iranian newborns [18,19,20], in addition to, relation between blood lead of mother and umbilical cord blood lead in newborns [9,21,22], also, the presence of refinery and petrochemical industries in the middle of Abadan, the researchers carried out this study. Results of this research can be applied in health planning of mothers and newborns. The aim of this study was to determine umbilical cord blood lead level and its relationship with birth weight, length and head circumference of the newborns in Abadan, Iran.

## MATERIALS AND METHODS

This study was a cross-sectional study that was done from June to September 2013 for four months. Ethics approval for the study was obtained from Ethical Committee of Ahvaz Jundishapur University of Medical Sciences. All mothers participated in the study with informed consent. Sampling was done with non probability sampling. In this way, all newborn that had the inclusion criteria since start of the study were selected as sample and this continued until reaching final size of the sample.

**Participants:** The research population included mothers and newborns in Abadan hospitals. To determine the sample size, mean estimate formula of  $n = \left(\frac{z_{1-\frac{\alpha}{2}}}{d}\right)^2 \sigma^2$  was used. ( $\alpha=0.05$ ,  $\bar{x}=28.5$ ,  $d=5$ ). In this study, 147 samples were included. Inclusion criteria for

the participant was, 15–49 years old, full term and single pregnancy. The exclusion criteria included mothers with acute, chronic and metabolic diseases, habit of smoking, severe stress in pregnancy and twin pregnancy.

**Data collection and analysis:** Data collection instruments included demographic questionnaire (age of mother, gestational age, newborn gender, job and education of mother) and also data registration form (umbilical cord blood lead concentration, weight, length, and head circumference of newborn). A total of 3 ml blood was collected from umbilical cord vein using heparin as anticoagulant, immediately after the birth. The samples were kept under cold conditions in cold box and sent to Biochemical Laboratory of Abadan School of Medical Sciences. Tests were performed by a single individual and with atomic absorption spectrophotometry equipped with GTA 120 graphite furnace, Varian model. All statistical analysis was performed using SPSS software version 16.0. A  $p \leq 0.05$  was set as the level of statistical significance. Descriptive statistics were reported as mean  $\pm$  SD. Means of two and more than two groups were compared with t-tests or parametrical equivalence (Mann–Whitney) and Kruskal–Wallis test. Spearman correlation coefficient was calculated for correlation between two quantitative variables.

## RESULTS

Blood lead concentrations in these sample were low ( $<5 \mu\text{g/dl}$ ). Characteristics of mothers and newborns at time of study enrollment and mean and standard deviation of umbilical cord blood lead, birth weight, length and head circumference are given in [Table/Fig-1,2].

Relationship between blood lead and birth weight was studied with Spearman correlation coefficient and the decrease of birth weight with increase blood lead was small, it was not significant ( $p=0.092$ ,  $r=-0.141$ ) [Table/Fig 3].

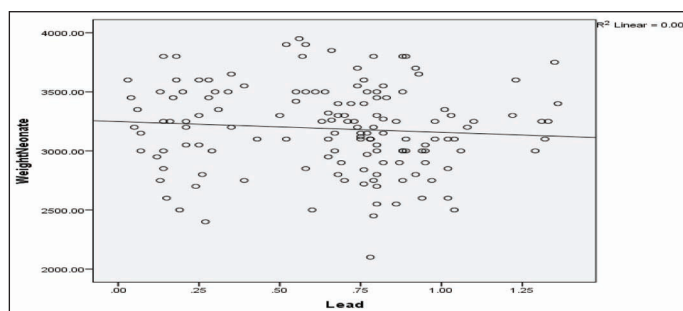
A significant correlation was found between length and head circumference of newborn and umbilical cord blood lead ( $r=-0.22$ ,  $p=0.008$ ), ( $r=-0.20$ ,  $p=0.01$ ) [Table/Fig-4,5].

Variables		No. (%) Mean $\pm$ SD
Newborn:		
Sex	Male	52.4% (77)
	Female	47.6% (70)
Weight	$\leq 2500$ g	5.4% (9)
	$\geq 2500$ g	94.6 (138)
Mother:		
Age (years)		25.4 $\pm$ 5.1
	Weight (Kg)	72.6 $\pm$ 10.3
	Gestational Age (weeks)	38.3 $\pm$ 3.82
Urban / Rural	Urban	88.4% (130)
	Rural	11.6% (17)
Education of mother	Less than high school	21.8% (32)
	High school	51.6% (76)
	Some college or bachelor degree	26.6% (39)
Job status	Housewives	95.2% (140)
	Employed	4.8% (7)

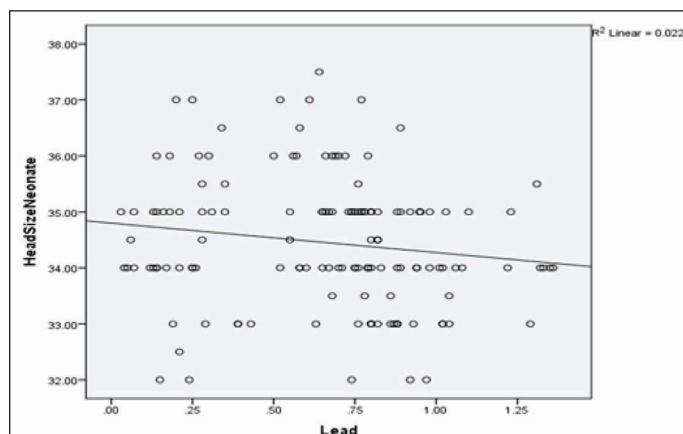
[Table/Fig-1]: Characteristics of mothers and newborns at the time of study enrollment (n=147).

Variables	Mean	SD
Lead concentration ( $\mu\text{g/dl}$ )	0.65	0.32
Weight (g)	3167.55	438.29
Length (cm)	49.25	3.18
Head circumference	34.32	1.48

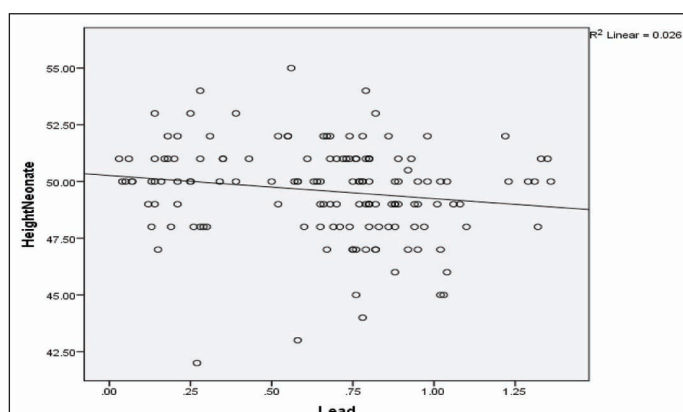
[Table/Fig-2]: Mean and standard deviation of umbilical cord blood lead concentration, birth weight, length and head size.



[Table/Fig-3]: Relationship between umbilical cord blood lead and newborn birth weight.

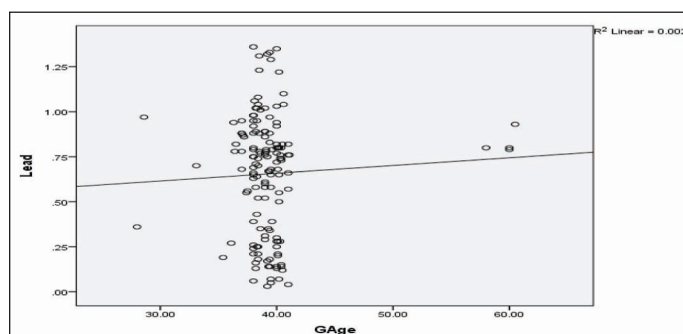


[Table/Fig-4]: Relationship between umbilical cord blood lead and newborn head circumference.



[Table/Fig-5]: Relationship between umbilical cord blood lead and newborn birth length.

To determine relationship between gender of neonate and blood lead, independent t-test was used and no significant correlation was obtained ( $t=1.07$ ,  $df=147$ ,  $p=0.29$ ). Relationship between umbilical cord blood lead and other variables of age, weight and education of mother was also studied and no significant correlation was found in any case. No significant relationship was reported between umbilical cord blood lead and residential place with Mann–Whitney test ( $p=0.74$ ) and job of parents with Kruskal–Wallis test ( $p=0.71$ ).



[Table/Fig-6]: Relationship between umbilical cord blood lead and gestational age.

No significant relationship was reported between gestational age and umbilical cord blood lead based on Spearman correlation coefficient ( $r=-0.08$ ,  $p=0.28$ ) [Table/Fig-6].

## DISCUSSION

In this study, mean umbilical cord blood lead was determined as  $0.65\pm 0.32$   $\mu\text{g}/\text{dl}$  ( $0.3-1.35$   $\mu\text{g}/\text{dl}$ ) and blood lead was  $<5$   $\mu\text{g}/\text{dl}$ . Some previous studies had similar results [21,23,24,25]. Umbilical cord blood lead was reported to be  $0.015\pm 0.009$   $\mu\text{g}/\text{dl}$  in France and  $0.3\pm 0.5$   $\mu\text{g}/\text{dl}$  in Portugal [23]. Based on studies by Zentner LE et al., Schell CM et al., and Al-Jawadi AA et al., the umbilical cord blood lead level were reported as  $3.9\mu\text{g}/\text{dl}$ ,  $1.58\mu\text{g}/\text{dl}$ ,  $3.26\pm 1.91\mu\text{g}/\text{dl}$  respectively [5,21,24]. In the study by Lee NJ et al. blood lead level of women of reproductive age (20-49 years) was determined  $1.8$   $\mu\text{g}/\text{dl}$  in America [25].

Blood lead level of neonate depends on exposure of mother to lead in environment, its storage in body and lead release in blood in pregnancy and its passage from placenta to fetus [7,21]. Also maternal diet and nutritional status during pregnancy affects blood lead level. Diet containing vitamin D, calcium, iron and zinc affects on reduction of neonatal blood lead level. Specially, relationship between high calcium level of mother and low lead level of neonate has been proved in some studies [21,24,26,27]. Lead and calcium have similar chemical structure and lead can potentially impair normal fetal bone growth by removing calcium from bone and replacing it with calcium in bone [26]. In study by Rothenberg in 1996 in Mexico, high consumption of milk in pregnancy was accompanied by low lead level in neonates [27]. Al-Jawadi AA et al. in Iraq showed that consumption of milk and its products in pregnancy and high calcium of mother were effective in prevention of blood lead level of mother and high iron of mother has protective role against umbilical cord blood lead level [24]. Results of study by Schell CM et al. also confirm that high Vitamin D, calcium and iron of mother has protective role against lead. So, increase in two standards of deviation in iron and calcium of mother reduces neonate blood lead level to  $0.77$   $\mu\text{g}/\text{dl}$  or reduces mean neonate blood lead level by 45% [21].

In the present study, results showed the decrease of birth weight with increase B-Pb was small and was not statistically significant. Also, there was reverse statistically significant correlation between umbilical cord blood lead level and length and head circumference that means when umbilical blood lead increases, the length and head circumference decreases. This finding is similar to result of study by Taylor CM et al. They found evidence for adverse effects of maternal B-Pb on the incidence of preterm delivery, birth weight, head circumference and crown heel length [1]. In study by Ramadan ELSawi I et al., there was significant difference between reduction of Hb level, gestational age, weight, length, head circumference and high lead level compared with low lead level in neonates [12]. In study by Falcon N et al., there was no significant correlation between umbilical cord blood lead and these two variables [15]. West WL et al., in their study didn't obtain significant relationship between mother's lead level and birth weight in neonates above 2500 g and below 2500 g [16]. In study by Zhu M et al. on mothers with low lead level below  $10$   $\mu\text{g}/\text{dl}$ , umbilical cord blood lead levels of between  $5$  and  $10$   $\mu\text{g}/\text{dl}$  had relationship with reduction of neonate weight by  $61-87\text{g}$  [13].

Based on findings of the study, there was no statistically significant relationship between gender of neonate, gestational age, job and education of mother and blood lead level of neonates. In study by Patel AB and Prabhu AS in India, there was significant relationship between gestational age and umbilical cord blood lead level. In this way, increase of mean umbilical cord blood lead level to  $1$   $\mu\text{g}/\text{dl}$ , gestational age was reduced by one week. Also, there was no significant relationship between education of mother and living in painted old houses and umbilical cord blood lead level [28]. In study by Zhu M et al., there was no relationship between lead level and premature birth and Small for Gestational Age (SGA) [13].

## LIMITATION

Limitation of study was the small sample size and lack of assessing maternal nutritional parameters.

## CONCLUSION

Maternal lead level caused adverse effects on birth outcomes. So, screening of pregnant women about concentration of the blood lead and giving information to pregnant women on sources of lead, how to prevent exposure and nutrition is necessary.

## ACKNOWLEDGEMENTS

Financial support was provided for research by the chancellor of Ahvaz Jundishapur University of Medical Sciences (Grant Number: U-89099). The authors wish to thank all of the ward personnel for their sincere collaboration during the research process.

## REFERENCES

- [1] Taylor CM, Golding J, Emond AM. Adverse effects of maternal lead levels on birth outcomes in the ALSPAC study: a prospective birth cohort study. *BJOG* 2015; 122:322-28.
- [2] Rahman A, Hakeem A. Blood Lead Levels during Pregnancy and Pregnancy Outcome in Karachi Women. *J Pak Med Assoc* 2003; 53:529-33.
- [3] Centers for Disease Control and Prevention. In: Ettinger AS, Wengrovitz AG, Portier C, Brown MJ, editors. Guidelines for the identification and management of lead exposure in pregnant and lactating women. Atlanta, GA: Centers for Disease Control and Prevention; 2010. [cited 2017 May 14]. Available from: <https://www.cdc.gov/nceh/lead/publications/leadandpregnancy2010.pdf>.
- [4] Popko J, Olszewski S, Hukalowicz K, Markiewicz R, Borawska MH, Szeparowicz P. Lead, Cadmium, Copper and Zinc Concentrations in Blood and Hair of Mothers of Children with Locomotor System Malformations Polish. *Journal of Environmental Studies* 2003; 12(3): 375-79.
- [5] Zentner LE, Rondo PH, Mastroeni SS. Lead Contamination and anthropometry of the New born Baby. *Journal of tropical Pediatrics* 2006; 52(5): 369-71.
- [6] ATSDR (Agency for toxic substance and Disease Registry). Toxicological profile for lead Atlanta: US. Department of Health and human service. 2007. [cited 2017 May 14]. Available from: <https://www.atsdr.cdc.gov/toxprofiles/tp13-p.pdf>
- [7] Lozoff B, Jimenez E, Wolf AW, Angelilli ML, Zatakia J, Jacobson SW, et al. Higher infant blood lead levels with longer duration of breast feeding. *J Pediatr*. 2009; 155(5):663-67.
- [8] Cleveland LM, Minter ML, Cobb KA, Scott A, German VF. Lead Hazards for Pregnant women and children: Part 2. *AJN* 2008; 108 (11): 40-47.
- [9] U.S.Preventive Services Task Force. Screening for elevated Blood Lead Levels in Children and Pregnant women: Recommendation Statement. *American Family Physician* 2007; 76(5): 691-94.
- [10] American College of Obstetricians and Gynecologists. Lead screening during pregnancy and lactation. Committee opinion number 533.2012. [cited 2017 May 14]. Available from: <http://www.acog.org/-/media/Committee-Opinions/Committee-on-Obstetric-Practice/co533.pdf?dmc=1&ts=20150301T0410069060>.
- [11] El-Deek SEM, Mohammed ZT, Fathy HM, Mohamed SA. Lead Levels in Maternal and Newborns Blood and Hair and Their Impact on Neonatal Anthropometric Measurements. *Bull. Egypt. Soc. Physiol. Sci.* 2013;33(1):107-22.
- [12] Ramadan ELSawi I, Helmy ELSaid M. Umbilical cord-blood lead levels and pregnancy outcome. *Journal of Pharmacology and Toxicology*. 2013;8(3):98-104.
- [13] Zhu M, Fitzgerald EF, Gelberg KH, Lin SH, Druschel CHM. Maternal Low-Level Lead Exposure and Fetal Growth. *Environmental Health Perspectives* 2010; 118(10):1471-75.
- [14] Chen PC, Pan I., Wang JD. Parental Exposure to Lead and Small for Gestational Age Births. *American Journal of Industrial Medicine* 2006; 49:417-22.
- [15] Falcon M, Vinas P, Luna A. Placental Lead M. Umbilical cord-blood lead levels and pregnancy outcome. *Toxicology* 2003; 185 (1-2): 59-66.
- [16] West WL, Knight EM, Edwards CH, Manning M, Spurlock B, James H, et al. Maternal Low Level Lead and Pregnancy Outcomes. *J. Nutr.* 1994;124:981S-986S.
- [17] Ratzon R, Sheiner E, Shoham-Vardi I. The role of prenatal care in recurrent preterm birth. *Eur J Obstet Gynecol Reprod Biol.* 2011;154:40-44.
- [18] Aljahan R, Hazrati S, Mirzarahimi M, Pourfarzi F, Ahmadi Hadi P. Prevalence and risk factors associated with preterm birth in Ardabil, Iran. *Iran J Reprod Med.* 2014;12(1):47-56.
- [19] Golestan M, Akhavan Karbasi S, Fallah R. Prevalence and risk factors for low birth weight in Yazd, Iran. *Singapore Med J.* 2011;52(10):730-33.
- [20] Roudbari M, Yaghmaei M, Soheil M. Prevalence and risk factors of low birth weight infants in Zahedan, Islamic Republic of Iran. *Eastern Mediterranean Health Journal.* 2007;13(4):838-45.
- [21] Schell LM, Denham M, Stark AD, Gomez M, Rovenscroft J, Parsons PJ, et al. Maternal blood lead concentration, diet during pregnancy, and anthropometry predict neonatal blood lead in a socioeconomically disadvantaged population. *Environmental Health perspectives* 2003;111(2):192-200.
- [22] Shannon M. Severe Lead Poisoning in Pregnancy. *Ambulatory Pediatrics* 2003; 3 (1):37- 39.

- [23] Al-Saleh I, Shinwaria N, Mashhour A, El Din Mohamed G, Rabah A. Heavy metals (lead, cadmium and mercury) in maternal, cord blood and placenta of healthy women. *International Journal of Hygiene and Environmental Health* (2011); 214:79–101.
- [24] Al-Jawadi AA, Al-Mola ZWA, Al-Jomard RA. Determinants of maternal and umbilical blood lead levels: across-sectional study, Mosul, Iraq. *BMC Research Notes* 2009;2:47.
- [25] Lee MG, Chun OK, Song WO. Determinants of the Blood Lead Level of US Women of Reproductive Age. *Journal of the American College of Nutrition*. 2005; 24(1):01–09.
- [26] Potula V. Report from the CDC: is lead exposure a risk factor for bone loss? *J Women Health* 2005;14:461–64.
- [27] Rothenberg SJ, Karchmer S, Schnaas L, Perroni E, Zea F, Salinas V, et al.. Maternal influences on cord blood lead levels. *J Expo Anal Environ Epidemiol* 1996; 6(2):211–27.
- [28] Patel AB, Prabhu AS. Determinants of Lead Level in Umbilical Cord Blood. *Indian Pediatrics* 2009;46(17):791–93.

**PARTICULARS OF CONTRIBUTORS:**

1. MS, Department of Nursing, Ahvaz Jundishapur University of Medical Sciences, Ahvaz, Iran; Abadan School of Medical Sciences, Abadan, Iran.
2. MS, Ahvaz Jundishapur University of Medical Sciences, Ahvaz, Iran; Department of Pediatric Nursing, School of Nursing and Midwifery, Iran University of Medical Sciences, Tehran, Iran.
3. Associate Professor, Department of Pediatrics, Aboozar Children's Hospital, Ahvaz Jundishapur University of Medical Sciences, Ahvaz, Iran.
4. MS, Department of Nursing, Abadan School of Medical Sciences, Abadan, Iran.
5. MS, Nanotechnology Research Center, Department of Toxicology, School of Pharmacy, Ahvaz Jundishapur University of Medical Sciences, Ahvaz, Iran.
6. PhD Scholar, Department of Biostatistics and Epidemiology, Research Center for Infectious Diseases of Digestive System, School of Public Health, Ahvaz Jundishapur University of Medical Sciences, Ahvaz, Iran.
7. PhD Student, Department of Pharmacology and Toxicology, Abadan School of Medical Sciences, Abadan, Iran.

**NAME, ADDRESS, E-MAIL ID OF THE CORRESPONDING AUTHOR:**

Ms. Sabeti Fahimeh,  
 Ahvaz Jundishapur University of Medical Sciences, Ahvaz, Iran.  
 Department of Pediatric Nursing, School of Nursing and Midwifery, Iran University of Medical Sciences, Tehran, Iran.  
 E-mail: sabetifa@yahoo.com

Date of Submission: **Oct 18, 2016**  
 Date of Peer Review: **Dec 25, 2016**  
 Date of Acceptance: **Apr 11, 2017**  
 Date of Publishing: **Jun 01, 2017**

**FINANCIAL OR OTHER COMPETING INTERESTS:** As declared above.